

# Make the most of Bedrock Mapper

Your starting guide



## Are you using the Bedrock platform to its full potential?



If you're not using Bedrock Mapper to teach disciplinary literacy (or Tier 3 vocabulary) across your school, there's so much more you can be doing.

This handy guide will get you started, whether you teach maths, sciences, history or anything else.



## What is Bedrock Mapper?

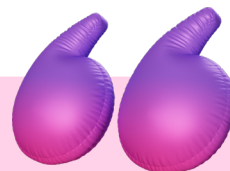
Bedrock Mapper extends literacy beyond English, teaching, assessing, and reteaching key vocabulary across all subjects. It moves beyond simple definitions, providing personalised instruction for students and rich data insights for teachers.

It ensures students master key terms and enables schools to meet the EEF's recommendation to provide targeted vocabulary instruction in every subject, known as disciplinary literacy.

### Why is this important?

You cannot teach a particular subject without students knowing the language of that subject first.

When students can understand and communicate using specialist vocabulary and concepts, they develop a confidence that leads to higher expectations of themselves. They may unlock a passion for a particular field of study and are empowered to direct their own learning. In turn, this means they can access and critique more complex thinking to further enhance their expertise.



Reading, writing, speaking and listening are at the heart of every subject in secondary school.

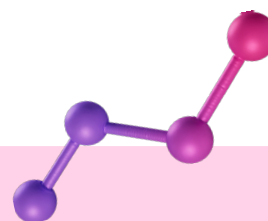
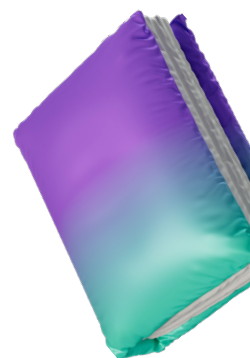
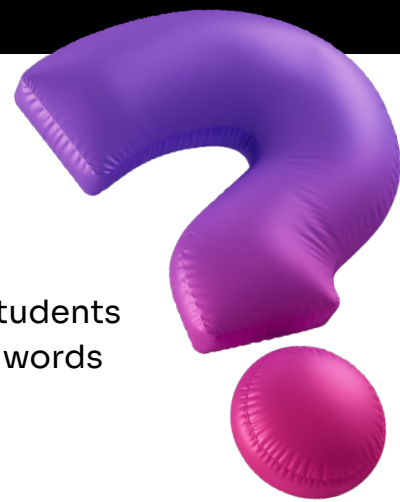
Focusing time and resources on improving reading and writing skills will have positive knock-on effects elsewhere, whether that's being able to break down scientific vocabulary or structure a history essay.

**EEF**

## Which words do you want students to meet and when?

As a subject specialist, you have control over which words your students meet; you simply select them from the 40,000+ subject-specific words in Bedrock Mapper's curriculum. From there, it's pretty simple:

- ✓ Once you've selected your words, you sequence the learning.
- ✓ Students access the content through the Bedrock platform. Each word is taught through our multimodal learning sequence.
- ✓ Our AI-driven reteaching algorithm then ensures students revisit key vocabulary and knowledge is retained in long-term memory.
- ✓ You can focus on your teaching, knowing that students are equipped with the language of that topic.



### Want to get started?

Visit this link to start adding words and sequencing learning for your classes.\*

**Get started with Mapper**

\*If you haven't logged in already, speak to your school's Bedrock Learning lead to get set up.





## How do students engage with the content?

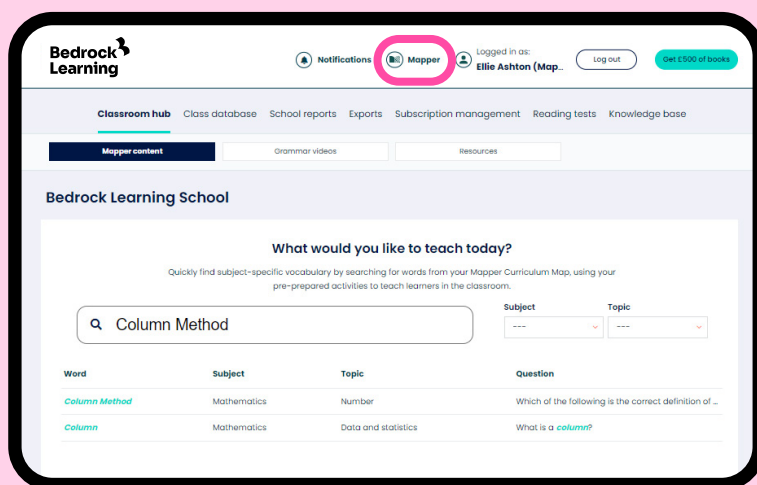
Words are taught in 'sets' of 5, but you can adjust this depending on your students' needs. Each session on Mapper includes the assessment (pre/post tests), explicit teaching and learning activities for the sequenced words within a set.

On average, students retain 88% of new information learned on Bedrock Mapper, so you are ensuring they know more and remember more as you move through your curriculum.



Students simply login to **app.bedrocklearning.org** (they can use SSO) and click on '**Mapper**'.

They will see the content you have assigned to them.



# What are the best ways to implement Mapper?

The platform offers you flexibility to set students work which they complete on the platform in class or as homework.

Here are a few ideas for you:



**Preteaching:** Many teachers are using Mapper to pre-teach key vocabulary. When students come to lessons after completing their Mapper work, they have the prior knowledge of the Tier 3 vocabulary they need to access their lessons, supporting their comprehension.



**Formative assessment:** Mapper can be used to check for understanding of key terms, following teaching input.



**'Do now':** As students arrive in class, teachers use Mapper as a 'do now' activity, which gives them immediate data on which students know which words. This then informs classroom practice.



**Literacy lessons:** In schools with distinct literacy lessons, Mapper can be used as a cross curricular literacy improvement tool.



**Summative assessment:** Some schools are sequencing 20 words at the start of a topic and again at the end to show understanding and progress.



**Homework:** Many teachers use Mapper as a self-marking homework tool in their subject area.



**Revision:** Mapper provides structured revision for students ensuring they revise all the necessary key words. Teachers then have clear data to identify and address knowledge gaps.

## How is it marked?

Across both our core and subject-specific curricula, automated marking saves teachers time and a live data dashboard informs classroom practice and interventions. Classroom teachers can identify knowledge gaps, celebrate success and adjust classroom practice based on data.

Leadership gains visibility and control over the disciplinary literacy agenda, identifying progress at the individual, class, year and micro population level.

## How else can Mapper be used to enhance your teaching?

As you can see, the students is on a personalised journey of learning with rich data insights. This is all individual to the student and allows them to work through the lessons on the Bedrock platform. However, that's not the only way it can support your teaching.

You can access your subject-specific vocabulary via the Classroom Hub and use it as a teaching tool from the front of your classroom.

### Further support

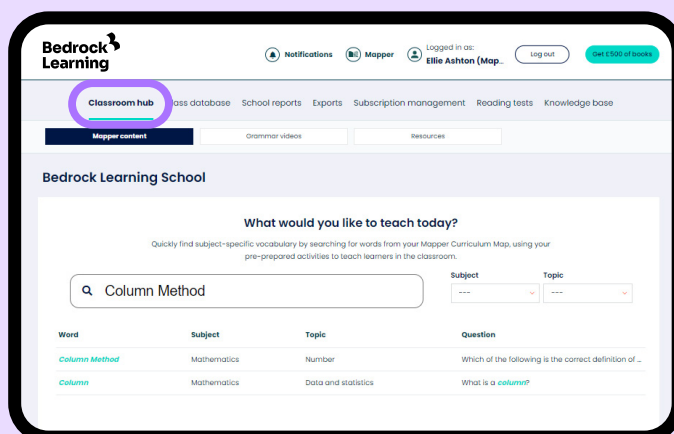
## What is the Classroom Hub?

The Classroom Hub is a comprehensive resource in the Bedrock teacher platform designed to enhance classroom teaching by providing teachers with access to bespoke subject-specific vocabulary content from the Mapper curriculum, all of which can be used on the whiteboard to ensure consistent and high-quality literacy instruction across subjects.

To access this, login to your account and click on '**Classroom Hub**'.

Then simply type the word you wish to teach into the search bar and select the word from the list.

(NB: A word must be in your curriculum map in order to appear in the Classroom Hub).







# Your next steps

The best way to see how the platform would enhance your lessons is to login, start selecting words and sequence the learning.\*

It's easy to do and you can get set up in just five minutes.

**Get started with Mapper**

\*If you haven't logged in already, speak to your school's Bedrock Learning lead to get set up.